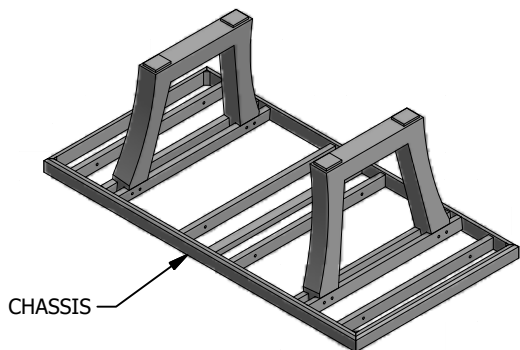
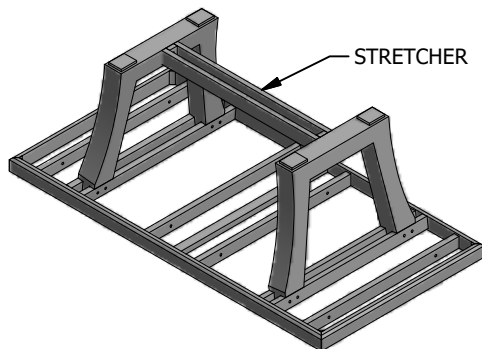


ASSEMBLY INSTRUCTIONS - TABLE TENNIS

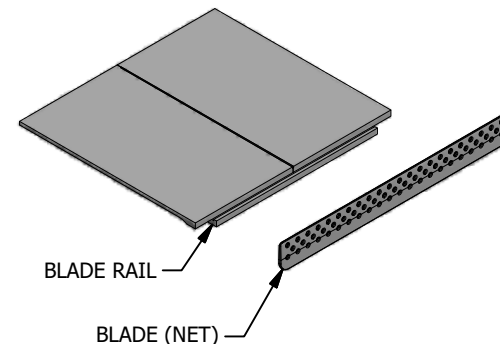
CALIFORNIA HOUSE



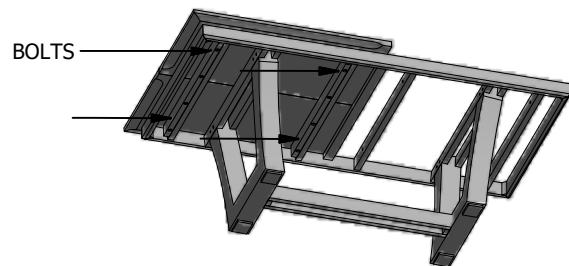
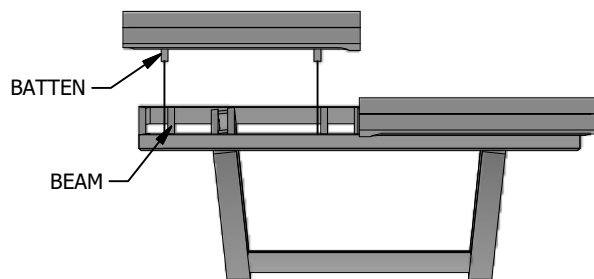
1 PLACE THE CHASSIS IN POSITION IN YOUR ROOM AND LAY IT UPSIDE-DOWN ON A PROTECTIVE SURFACE SO THAT NO DAMAGE IS DONE TO YOUR FLOOR OR TO THE CHASSIS. PLACE THE LEGS IN POSITION AND FASTEN LOOSELY USING THE BOLTS PROVIDED. DO NOT FULLY FASTEN THE BOLTS, LEAVING THE LEG SLIGHTLY LOOSE SO THAT THE CENTER STRETCHER CAN BE INSTALLED.



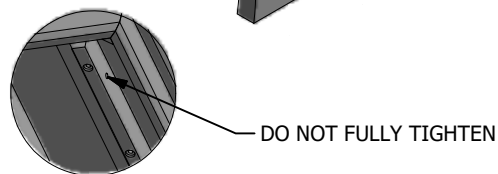
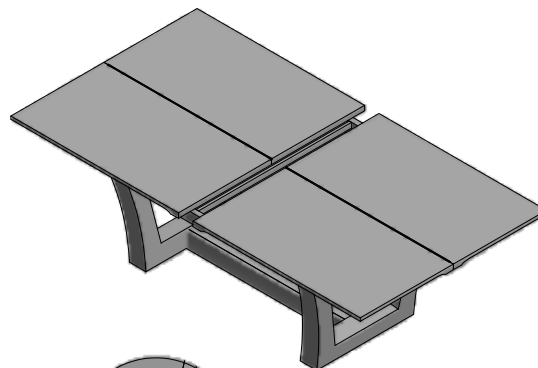
2 INSTALL THE CENTER STRETCHER BY USING THE BOLTS AND WASHERS PROVIDED. THEN FASTEN THE LEGS TIGHTLY. WITH HELP, FLIP THE TABLE UPSIDE RIGHT.



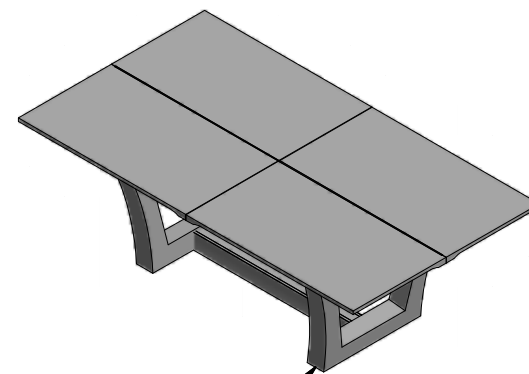
3 LOCATE THE "FIXED" TOP. IT HOLDS THE BLADE RAIL INTO WHICH THE BLADE (NET) WILL BE INSERTED.



4 WITH HELP, LIFT THE "FIXED" TOP INTO POSITION SO THAT THE BATTENS ON THE TOP SIT TO THE OUTSIDE OF THE BEAMS. THEN SLIDE THE TOP TOWARD THE CENTER OF THE TABLE UNTIL IT COMES IN CONTACT WITH THE BEAMS. USE 4 OF THE 4" BOLTS AND WASHERS TO FASTEN THE BATTENS TO THE BEAMS.



5 WITH HELP, LIFT THE "MOVING" TOP INTO POSITION JUST AS IN THE LAST STEP AND SLIDE IT TOWARD THE TABLE UNTIL IT COMES IN CONTACT WITH THE BLADE. USE 4 OF THE 4" BOLTS TO VERY LOOSELY FASTEN THE BATTENS TO THE BEAMS. DO NOT FULLY TIGHTEN THE NUTS. THE MOVING TOP NEEDS TO BE ABLE TO SLIDE BETWEEN AN OPEN AND CLOSED POSITION TO ACCEPT THE BLADE (NET)



ADJUSTABLE GLIDES

6 IF THE TABLE IS NOT LEVEL ON THE FLOOR - CREATING POOR CONTACT BETWEEN THE TOP AND THE CHASSIS - USE THE ADJUSTABLE GLIDES ON THE LEGS TO LIFT THE LOW CORNER.